



FATE

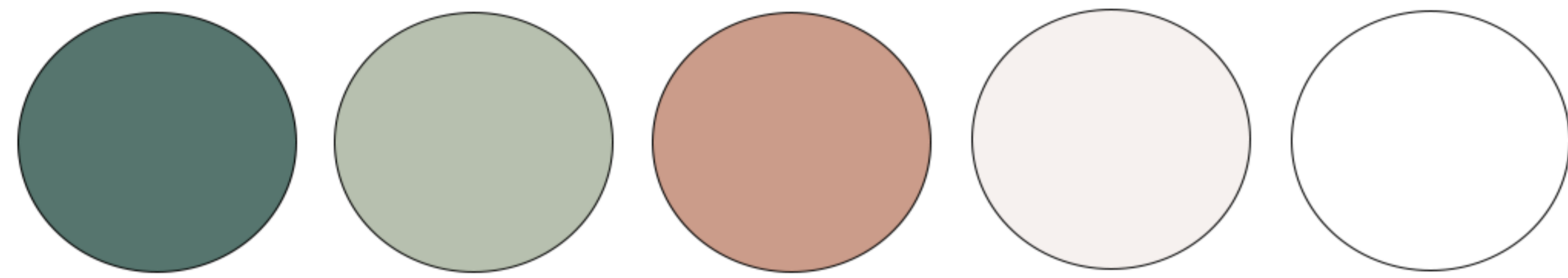
MOBILE BOUTIQUE - Megan Schaafsma



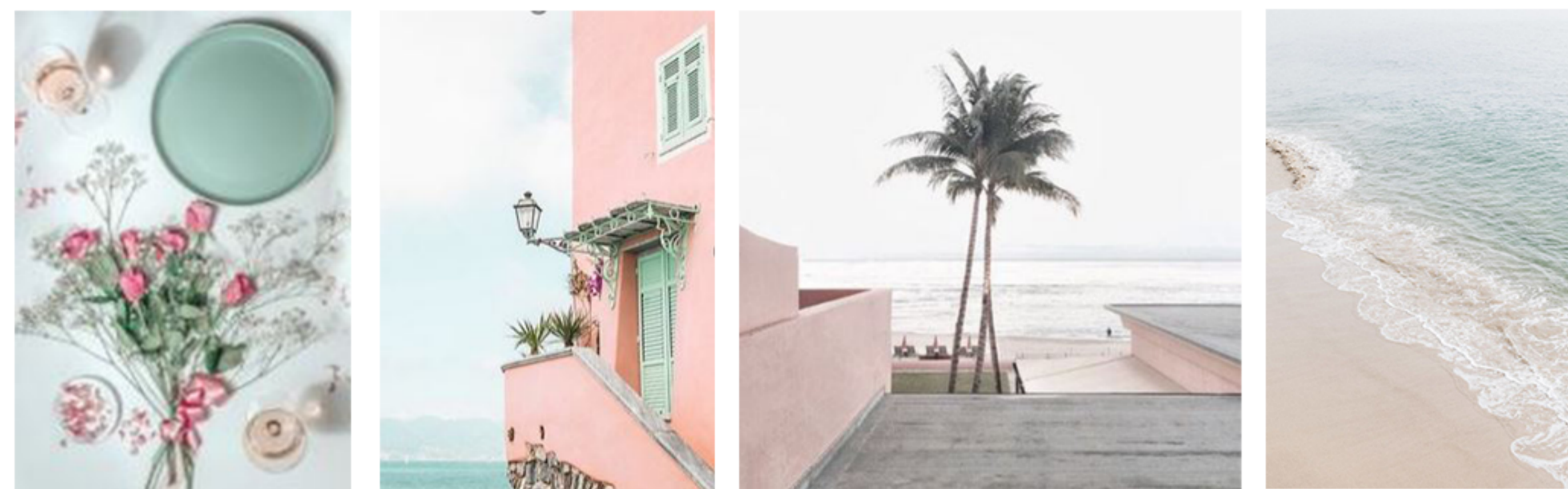
CONCEPT: MALIBU

Malibu is home of some of the nicest beaches. This design encapsulates the malibu aesthetic. Not only does it incorporate elements of the beach, but it also displays a feminine touch throughout the space with choices of colour and materials. Malibu has the prettiest pink sunsets so keeping that in mind when you enter this boutique you will be greeted by beautiful pops of pink and sage green that transport you to the sandy shores of Malibu, California.

COLOUR SCHEME



MOOD/INSPO



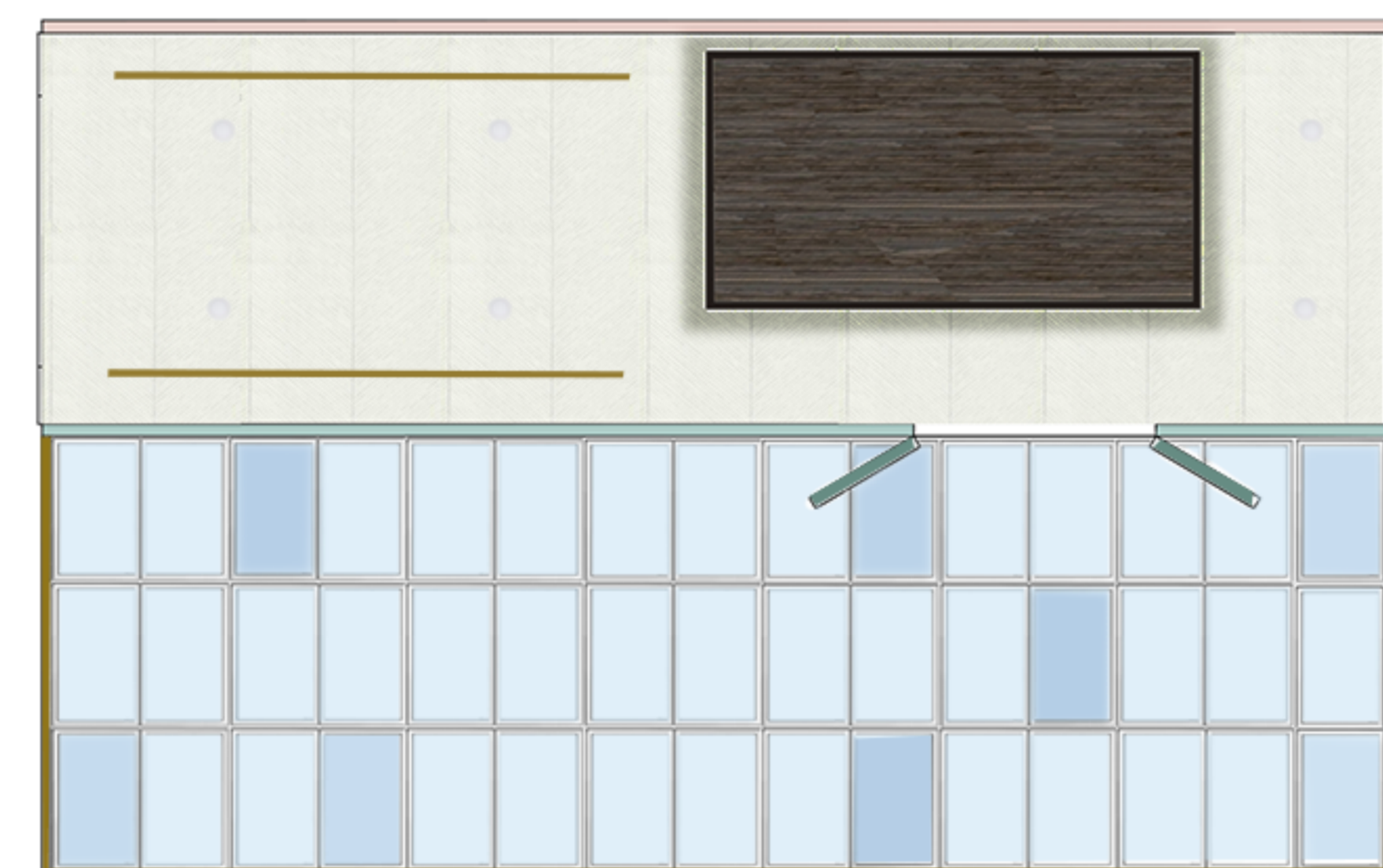
FLOORPLAN

SCALE: 1/4" = 1'-0"



REFLECTED CEILING PLAN

SCALE: 1/8" = 1'-0"



MATERIALS/FFE



MATERIALS KEY

- STORAGE CABINET
- WALL COVERING
- CASH DESK FEATURE
- WALL TILE
- FINISHES
- CASH DESK COUNTERTOP
- SOUTH INTERIOR WALL WALL COVERING
- LINEN DRAPERY FOR FITTING ROOMS
- CASH DESK WOOD PLANKS
- JEWELRY DISPLAY TILE
- FLOORING
- CEILING WALLCOVERING
- EXTERIOR SIDING PAINT
- INTERIOR WALL PAINT
- FITTING ROOM WALL PAINT
- TRIM AND INTERIOR BENCH PAINT

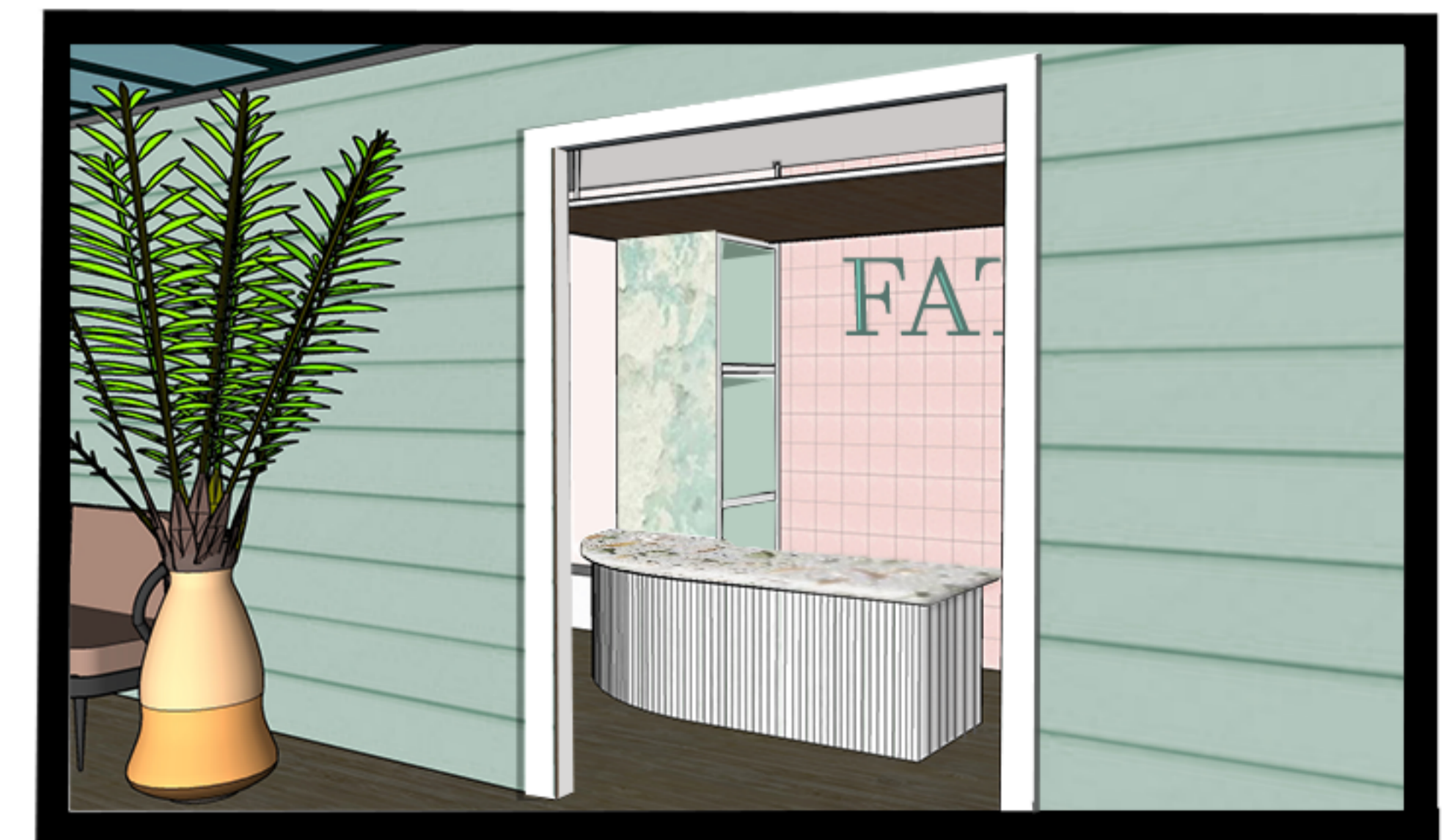
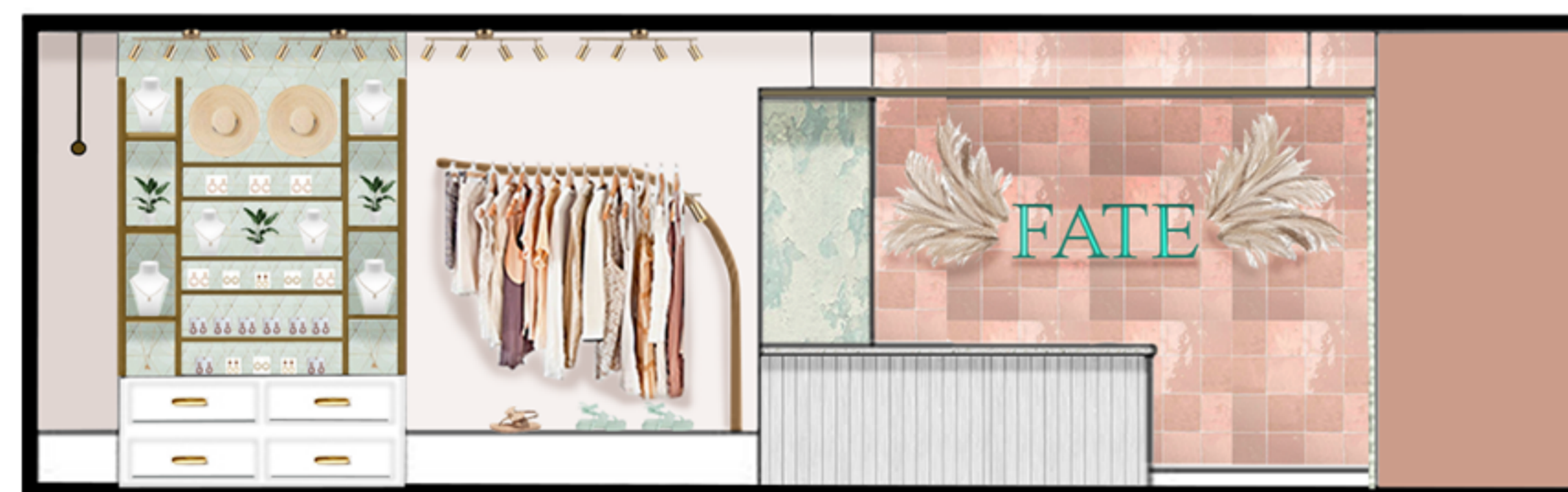
FURNITURE KEY



- MANEQUINS
- FEATURE DIVIDER WALL
- WALL SHELVING DISPLAY SETUP
- WALL CURVED CLOTHING RACK
- EXTERIOR FOLDING SKYLIGHT AWNING
- PATIO COUCH
- TRACK LIGHTS
- POTLIGHTS

ELEVATIONS

SCALE: 3/16" = 1'-0"



GENERAL NOTES:

FLOORPLAN

- 3FT WALKWAY CIRCULATION IN ALL MAJOR ISLEWAYS
- FOLDABLE STAIR/PATIO THAT CAN EASILY BE ASSEMBLED AND TAKEN DOWN AND SECURED ONTO TRAILER ROOF
- FOLDABLE EXTERIOR WALLS FOR MORE DISPLAY SPACE, SECURED TIGHTLY TO TRAILER WHEN NOT IN USE
- BENCH TRIMS THE INTERIOR OF THE TRAILER AT 1FT HEIGHT
- FLOORING MAKE OF A VINYL OAK PLANK
- SECURITY SYSTEM LOCATED BEHIND CASH DESK

RCP

- DROP CEILING ABOVE CASH DESK SUSPENDED 1FT FROM ORIGINAL CEILING, NEW HEIGHT BEING 7FT
- REMAINDER OF THE CEILING TO BE COVERED IN A CHEVRON VINYL WALL COVERING
- EXTERIOR AWNING MAKE FROM WINDOW'S TO BRING IN NATURAL LIGHT
- LIGHT FIXTURES INCLUDE GOLD FINISHED TRACK LIGHTS TO ACT AS ACCENT LIGHTING FOR MAJOR DISPLAYS IN THE INTERIOR, RECESSED POTLIGHTS TO CARVED THE WALKWAYS OF THE INTERIOR PLACED EVENLY 4FT APART FOR GENERAL LIGHTING, LED STRIP LIGHTS THAT TRIM THE DROP CEILING TO ACT AS A DECORATIVE LIGHTING TECHNIQUE AND LASTING THE SUNLIGHT THAT FILLS THE PATIO ACTING AS GENERAL LIGHTING TO BRING THE OUTSIDE IN AND CREATE A MORE WELCOMING ENVIRONMENT

3D ILLUSTRATIONS:

- FINALIZATION OF THE DESIGN, DEVELOPED INTO A 3D MODEL
- THESE RENDERINGS SHOW THE HARMONY AND UNITY WITHIN THE SPACE WHEN ALL THE MATERIALS AND FIXTURES AND PUT TOGETHER
- FINAL TOUCHES AND DECOR OUR SEEN MIXED IN THROUGHOUT: PALM TREE, PLANTS, WALL ART ETC.

ELEVATIONS

- WITHIN THE 5 ELEVATIONS WE CAN SEE THE DESIGN BROUGHT TO LIFE
- FIXTURE CHOICES ARE DISPLAYED ON THE INTERIOR AND EXTERIOR WALLS AS SHELVING, RACKS AND PEGS TO AESTHETICALLY AND FUNCTIONALLY DISPLAY ALL THE MERCHANDISE
- BETTER VISUAL OF THE SUSPENDED CEILING AND HEIGHTS OF FURNITURE. THE CASH DESK TO BE AT 2'-6" IN HEIGHT

